

User guide for the USB diagnostic cable driver's installation

Windows 7/ Windows 10

Attention: administrator rights necessary.

Connect the diagnostic cable with the USB interface of your computer.

If an internet connection is available, Windows 7/ Windows 10 will connect automatically with the Windows Update website to install the suitable driver. In this case no further steps are necessary.

If an internet connection is not possible or no suitable driver is found, the driver can be installed manually.

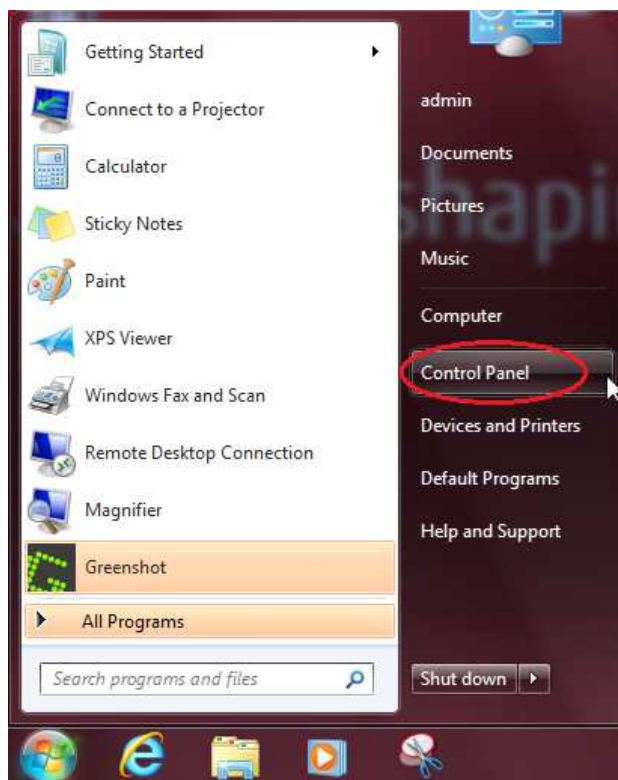
The driver consists of two parts which need to be installed successively:

- USB serial converter for the basic functionality
- USB serial port for the virtual COM port

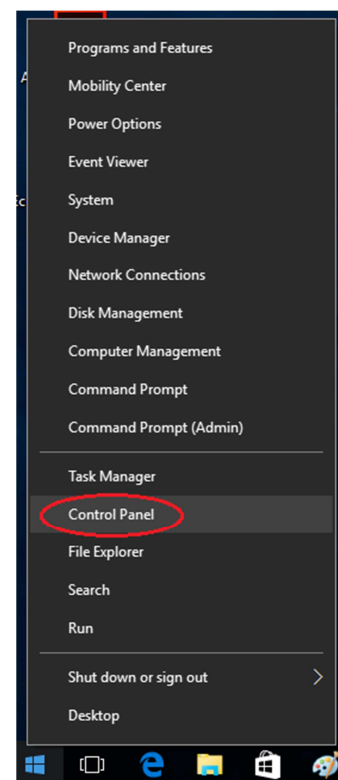
Following steps need to be performed:

1. USB serial converter

1. Press the Windows Start button -> Control Panel

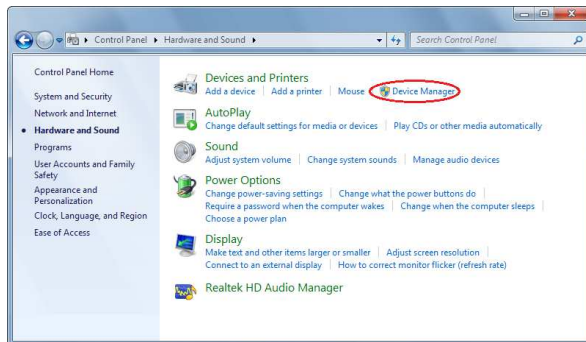


(Windows 7)

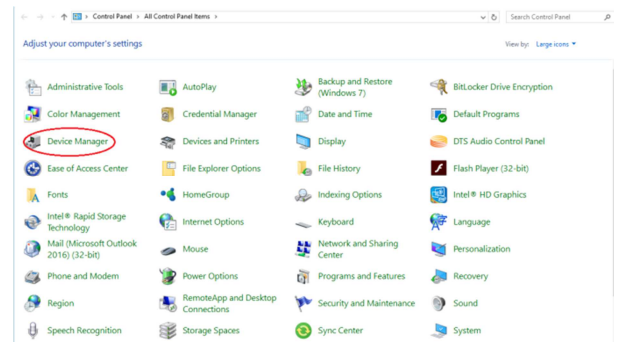


(Windows 10)

- Press Hardware and Sound -> Devices and Printers -> Device Manager

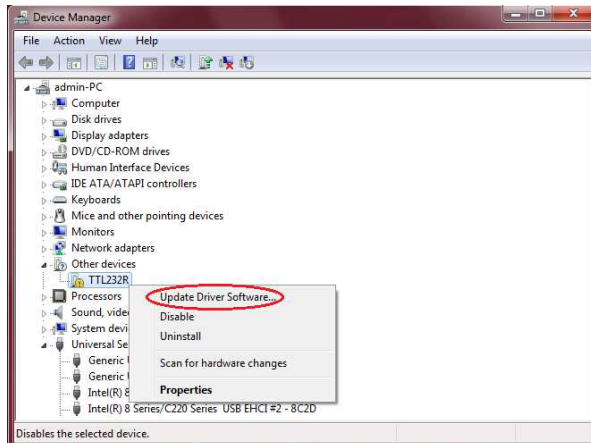


(Windows 7)

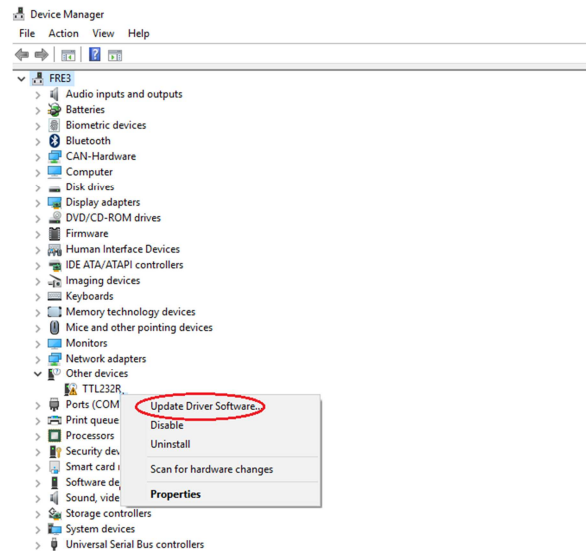


(Windows 10)

- Within this list [Device Manager] the device [TTL232R] is marked with a yellow icon. The right click menu then shows the option to update the driver software.

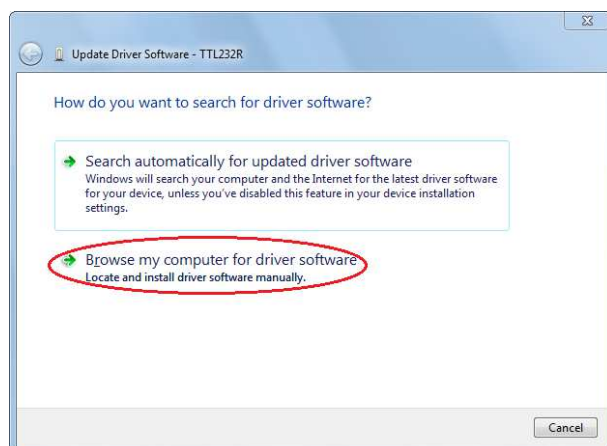


(Windows 7)

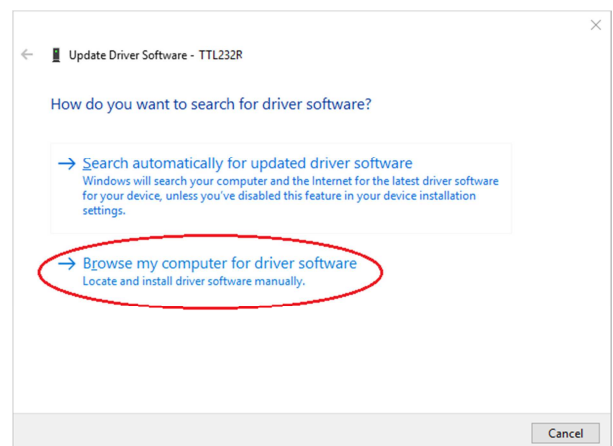


(Windows 10)

- Chose the option [Browse my computer for driver software].

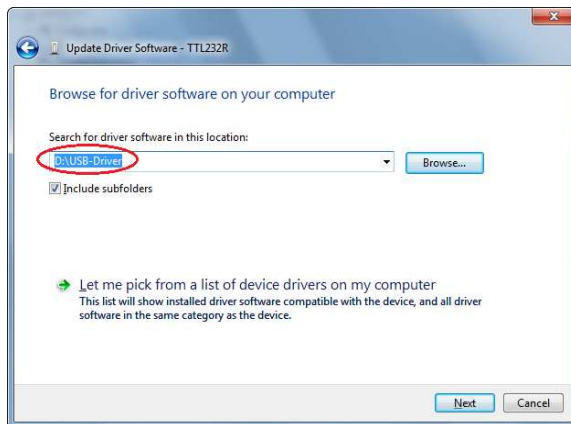


(Windows 7)

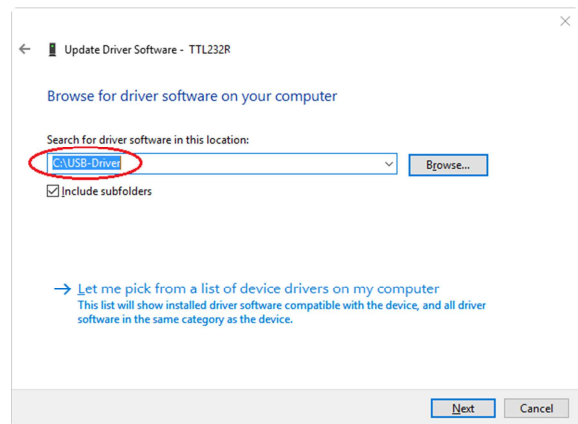


(Windows 10)

- In the next window, set the correct path to the driver on the CD which is included in the delivery: [D:\USB-Driver], then [Next].

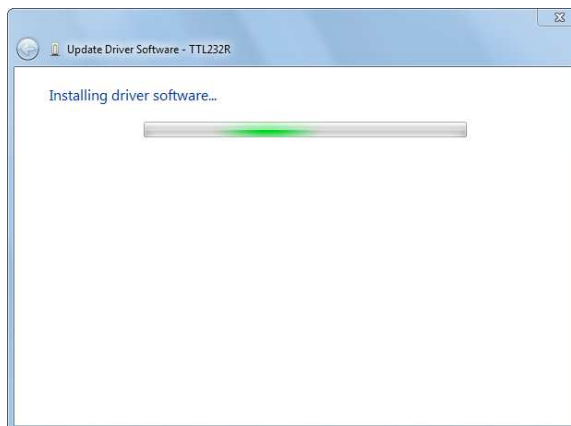


(Windows 7)

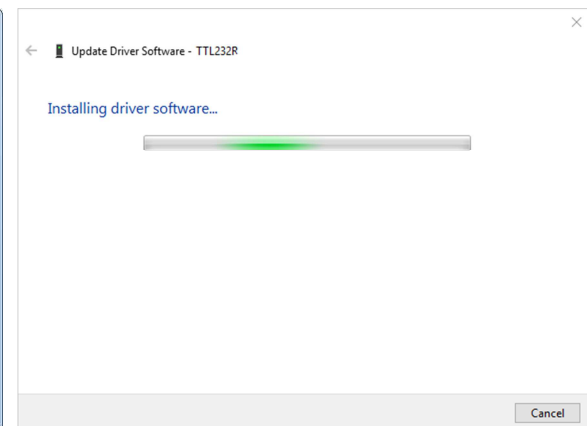


(Windows 10)

- Now the driver will be installed.

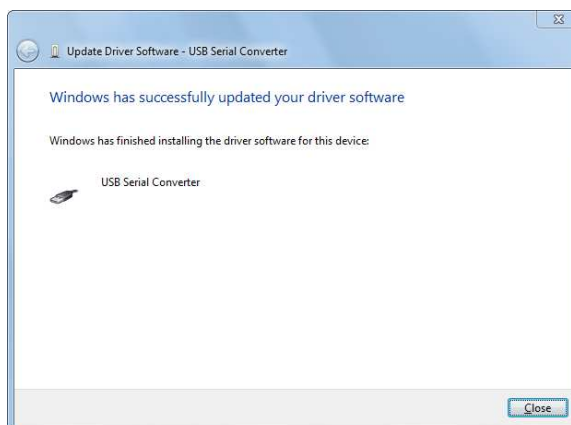


(Windows 7)

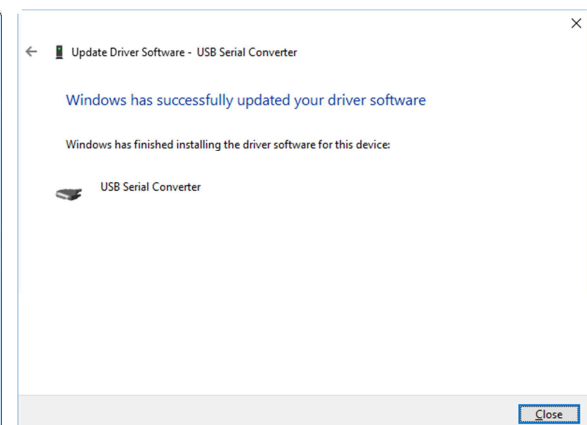


(Windows 10)

- The drivers found in the specified path will be installed. This completes the installation of the driver for the USB controller (USB Serial Converter).



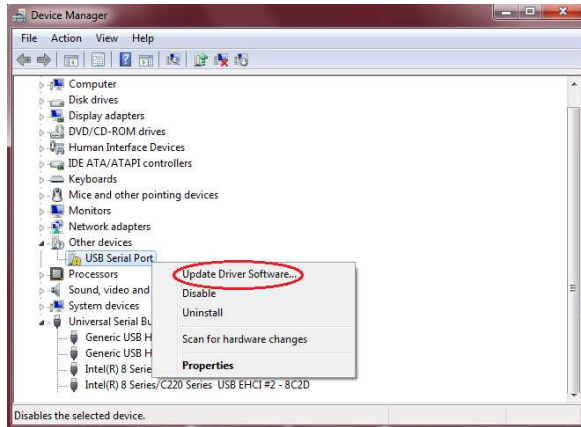
(Windows 7)



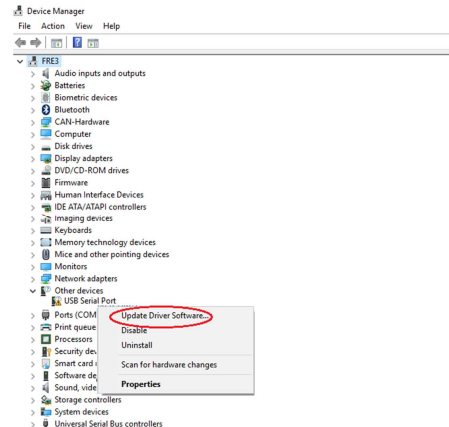
(Windows 10)

2. USB serial port / virtual COM port

1. In the list [Device Manager], the USB serial port will be displayed with a yellow warning icon. The right click menu then shows the option to [Update Driver Software...] to install the necessary driver.

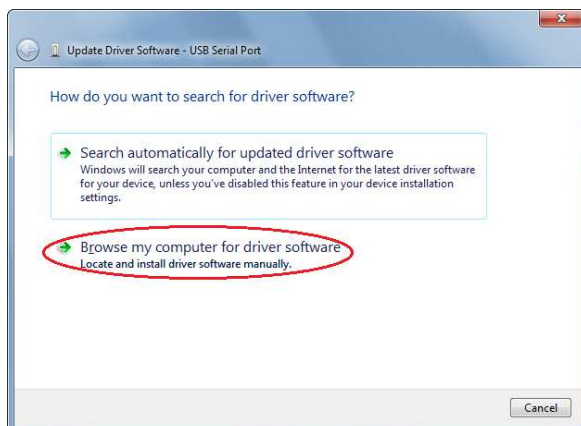


(Windows 7)

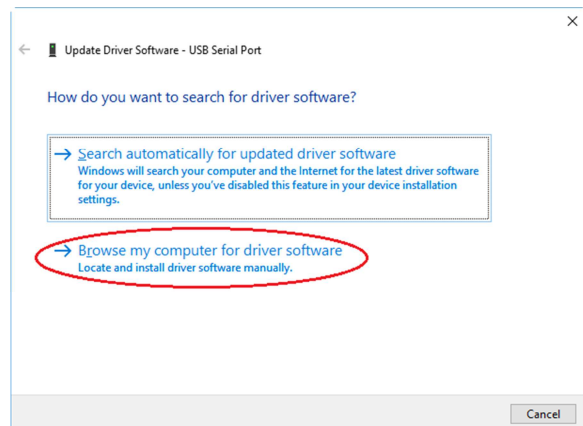


(Windows 10)

2. Chose [Browse my computer for driver Software].

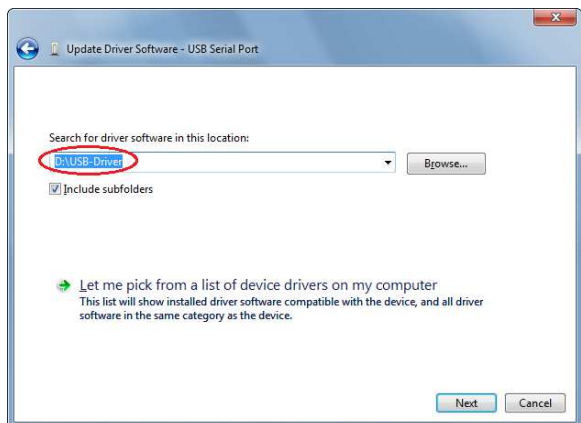


(Windows 7)

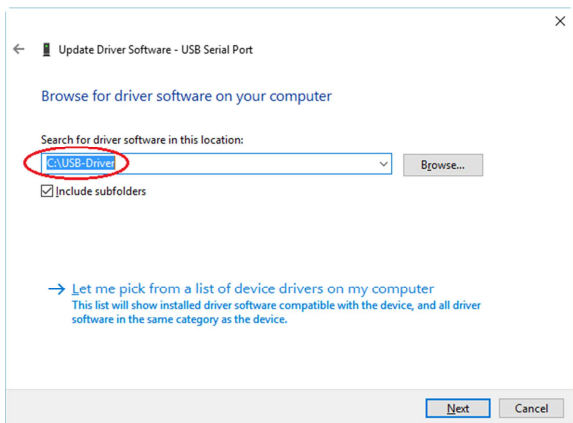


(Windows 10)

3. In the next window, set the correct path to the driver on the CD which is included in the delivery: [D:\USB-Driver], then [Next].

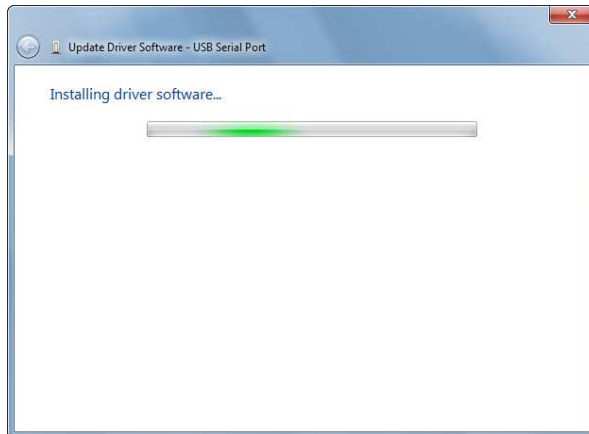


(Windows 7)

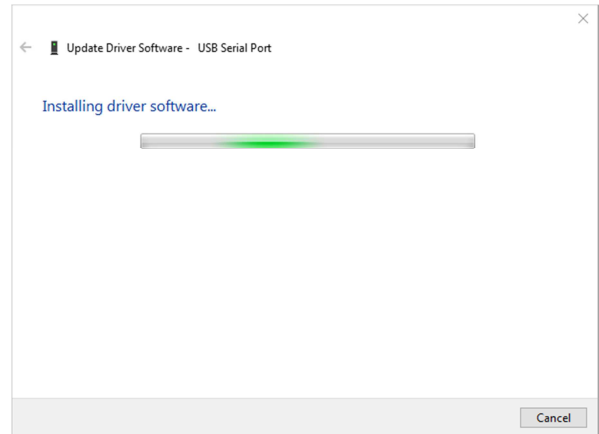


(Windows 10)

4. Now the USB serial port driver will be installed.

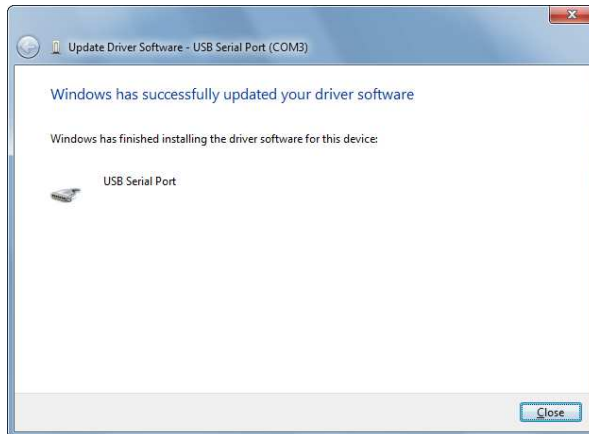


(Windows 7)

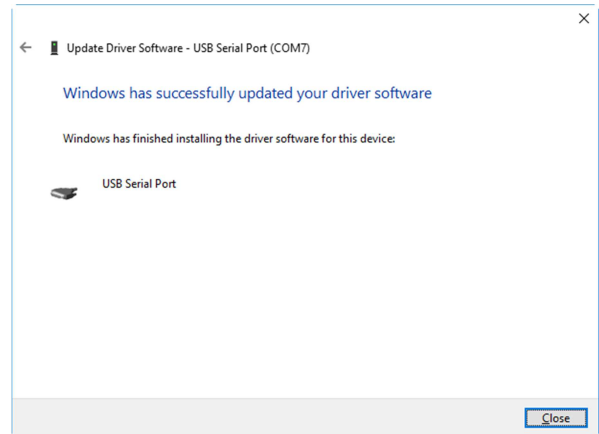


(Windows 10)

5. The drivers found in the specified path will be installed. This completes the installation of the driver for the virtual COM port (USB Serial Port).

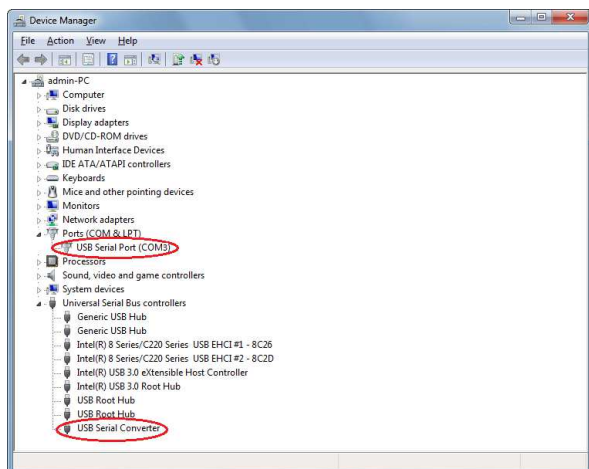


(Windows 7)

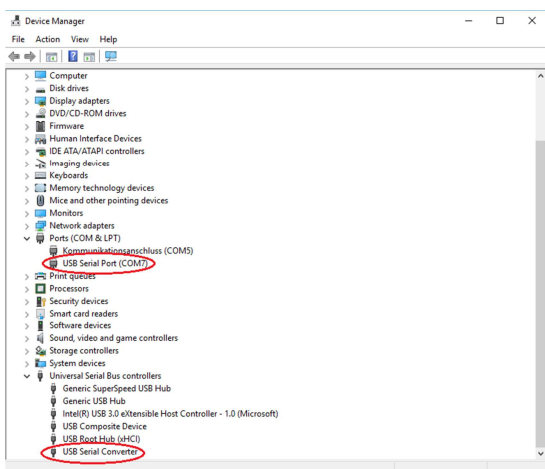


(Windows 10)

6. After successful driver installation, the entries in the [Device Manager] look like this:
(the COM port number may vary)



(Windows 7)



(Windows 10)